



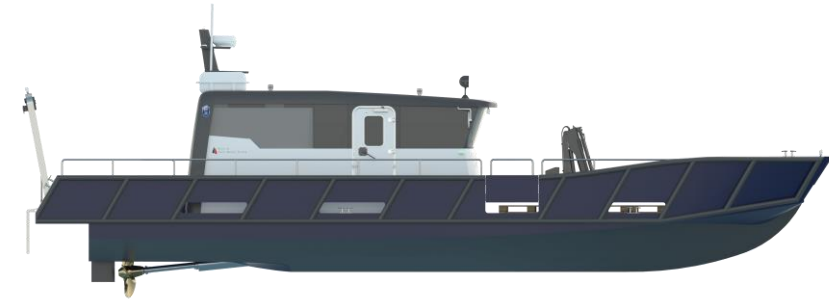
PROZERO 15M ARCHIPELAGO DIVING

OFFSHORE

POLICE / MILITARY

WORKBOATS





Design:	2017 5000-05-12
Length overall, approx.:	14,92 m
Beam overall, approx.:	3,76 m
Draft (full load), approx.:	0,70 m
Capacity:	8 pax. + 2 crew
Maximum load:	2.000 kg
Engines:	1 x inboard diesel
Drive:	1 x FPP

BENEFITS:

This vessel has been designed for multipurpose with a hydraulic wide bow door, a crane in the foredeck and an A-Frame on the aft deck for lifting equipment.

The unique ProZero system with a flexible attached cabin reducing both noise and vibrations from hull and engines. The design of the ProZero cabin ensure a huge amount of daylight, this also improve the personal comfort. Benefits by being significantly lighter than market average is lower fuel consumption.

OPERATIONAL FEATURES:

Speed: 17+ kt (lightweight)
 Speed (cruise): 17+ kt
 Fuel capacity: 700 l

DESCRIPTION:

The boat has been built to meet the requirements from the competent authorities.

HULL, DECK AND SUPERSTRUCTURE:

The boat is made of a combination of glass- and carbon fibre as sandwich construction with PVC as core material. This core material act as a natural buoyancy reserve material, due to its lightweight and zero water-absorption. Moreover, the sandwich construction avoids the use of internal stiffeners, increasing the usable internal space and offers a natural insulation capability, improving the comfort in the cabin and manned compartments.

FENDER:

The fender is disposed all around the hull in a double line with some vertical stripes on the sides for additional protection.

The fender has a D profile of 100 x 100 mm. It is made of hard rubber and glued to the hull.

DECK:

Deck is self-bailing.
 Large working area in the fore deck and the aft deck.
 Flush deck with multiple lashing points.
 Hydraulic crane on the starboard side in the fore deck.
 A-Frame on the aft deck with open transom.
 Aluminium railings, detachable in the aft.
 1 x Diving ladder, detachable.

CABIN & COCKPIT:

Cabin fixed through anti vibration blocks to hull to improve acoustical insulation inside the cabin.
 2 x pilot seats for the crew.
 4 x comfort seat for passengers.
 1 x Couch with removeable backrest to accommodate sleeping.
 1 x Fold out bed mounted on the cabin wall.
 1 x Hinged door in the starboard side of the cabin.
 1 x Glazed hatch on the roof, for improved visibility.
 Windshield wiper and defrosting system.
 All windows are glued into the structure.
 Lights in cockpit with dual mode white / red light.
 Heating system.
 Toilet with WC and sink.
 Pantry, with sink, microwave and fridge.

TECHNICAL:

ENGINES, PROPULSION, STEERING etc.

1 x inboard diesel engine.
 1 x FPP.
 1 x hydraulic pump couple to one of the main engines.

TANKS:

2 x diesel tank with hatch and filling protection.
 1 x 100 l fresh water tank.
 1 x 100 l black water tank.
 1 x 20l hot water thermo bottle.
 All fuel systems are pressure tested.

ELECTRICAL SYSTEM & LIGHTING:

All electrical wiring in marine cable.
 Shore power with control lamp, marked fuses, earth connection and 20 m shore cable.
 24-volt electrical system.
 Main switches with separate battery systems for start, navigation and consumption.
 Battery charger with indicator.
 220 V-outlets in cabin.
 1 x searchlight on cabin roof, manual operated.
 Navigational lights.
 Multiple floodlights on the foredeck, aft deck, dive support frame and A-Frame.
 2 x bow lights.

NAVIGATION & ELECTRONIC EQUIPMENT:

Electric engine controls. Complete engine instruments with RPM, temperature, oil pressure and voltmeter for start batteries supplied by engine manufacturer.
 Fuel gauge.
 Control panel for all lighting and other electrical equipment.
 1 x magnetic compass.

SECURITY EQUIPMENT:

1 x manual bilge pump.
 1 x electrical emergency pump in bilge, manual start.
 1 x electrical emergency pump in engine room, manual start.
 1 x fire extinguisher at helmsman station.
 1 x fixed fire extinguishing system on the engine room.