

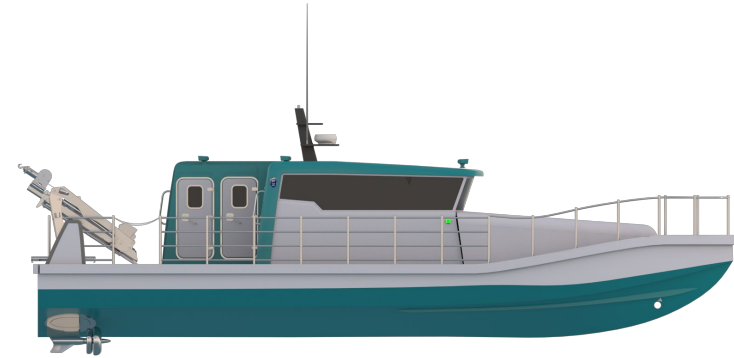
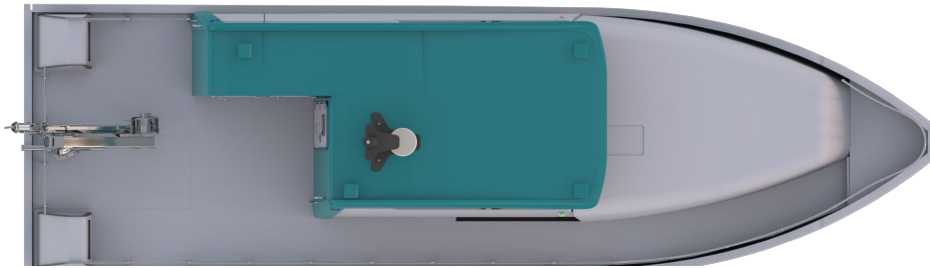


OFFSHORE

DEFENCE

WORKBOATS





Design:	2021 5000-05-29
Length overall, approx.:	15 m
Beam overall, approx.:	4,5 m
Capacity:	6 persons
Maximum load:	1.500 kg
Engines:	2 x inboard diesel

BENEFITS:

The 15m work boat is designed to accommodate workspace for up to 4 specialists in addition to the helmsman's workstation. The design enables efficient work under changing weather conditions. The cabin has been designed with workshop, drying room for clothes, sleeping and living space for 5, with attention to ergonomics and working environment. Noise insulation ensures comfort and easy communication under all operating conditions and the layout have been organized to facilitate workflow coordination, both during the tasks and during transport to and from the sites. The cockpit layout is designed to maximize comfort on stays on longer trips

OPERATIONAL FEATURES:

Speed(cruise): 25 kts
Range: 350nm at cruise speed.
Fuel capacity: 2.000 l.

DESCRIPTION:

The boat has been built to meet the requirements from the competent authorities and features a redundant propulsion system.

HULL, DECK AND SUPERSTRUCTURE:

The boat is made of glass fibre as sandwich construction with PVC as core material. This core material acts as a natural buoyancy reserve material, due to its lightweight and zero water-absorption. Moreover, the sandwich construction avoids the use of internal stiffeners, increasing the usable internal space and offers a natural insulation capability, improving the comfort in the cabin and manned compartments.

FENDER:

The fender has a profile of 300 x 250 mm. It is made of hard rubber and bolted to the hull.

DECK:

Deck is self-bailing.
Large working area aft of the cabin.
Crane
6 mooring bites.
Aluminium railings on aft and fore deck.

CABIN & COCKPIT:

Toilet with toilet, sink, shower and space for washing machine.
2 combined helmsman/workstation.
2 bench and table in the aft of the main cabin.
Bunks for 5 crews.
Hinged door in the aft of the cabin.
Defreeze system for windows with hot air blowers.
All windows are glued into the structure.
Led lights in cabin and cockpit.

TECHNICAL:

ENGINES, PROPULSION, STEERING etc.

2 x inboard diesel engines with IPS.
Other propulsion systems are possible.
Independent diesel generator - 230V.

TANKS:

Structural diesel tank with hatch and filling protection.
Independent fresh water tank.
Independent black water tank with odourless filter.

ELECTRICAL SYSTEM & LIGHTING:

All electrical wiring in marine cable.
Shore power with control lamp, marked fuses, earth connection.
Isolation transformer with earth plate for protection of galvanic corrosion.
12-volt electrical system.
Main switches with separate battery systems for start, navigation and consumption.
Battery charger with indicator.
1 x searchlight on cabin roof, manually operated.
operated.
Navigational lights.
Floodlights on aft deck.

NAVIGATION & ELECTRONIC EQUIPMENT:

Complete engine instruments supplied by engine manufacturer.
Fuel gauge.
Control panel for all lighting and other electrical equipment.
1 x magnetic compass.

SECURITY EQUIPMENT:

Bilge pumps.
Fire extinguisher at helmsman station.
Automatic fire extinguisher system in engine room.